

Design Sprint 2022

Team 4

Dilnaz Zhumabayeva, Tuulia Jukarainen,
Aura Kangasniemi, Jaidev Sehgal, Aapo Käki



>30%

of urban areas are used for
parking lots

It was the design of 20th century.
The time has changed.

There are already
1200
parking lots in Ratina.

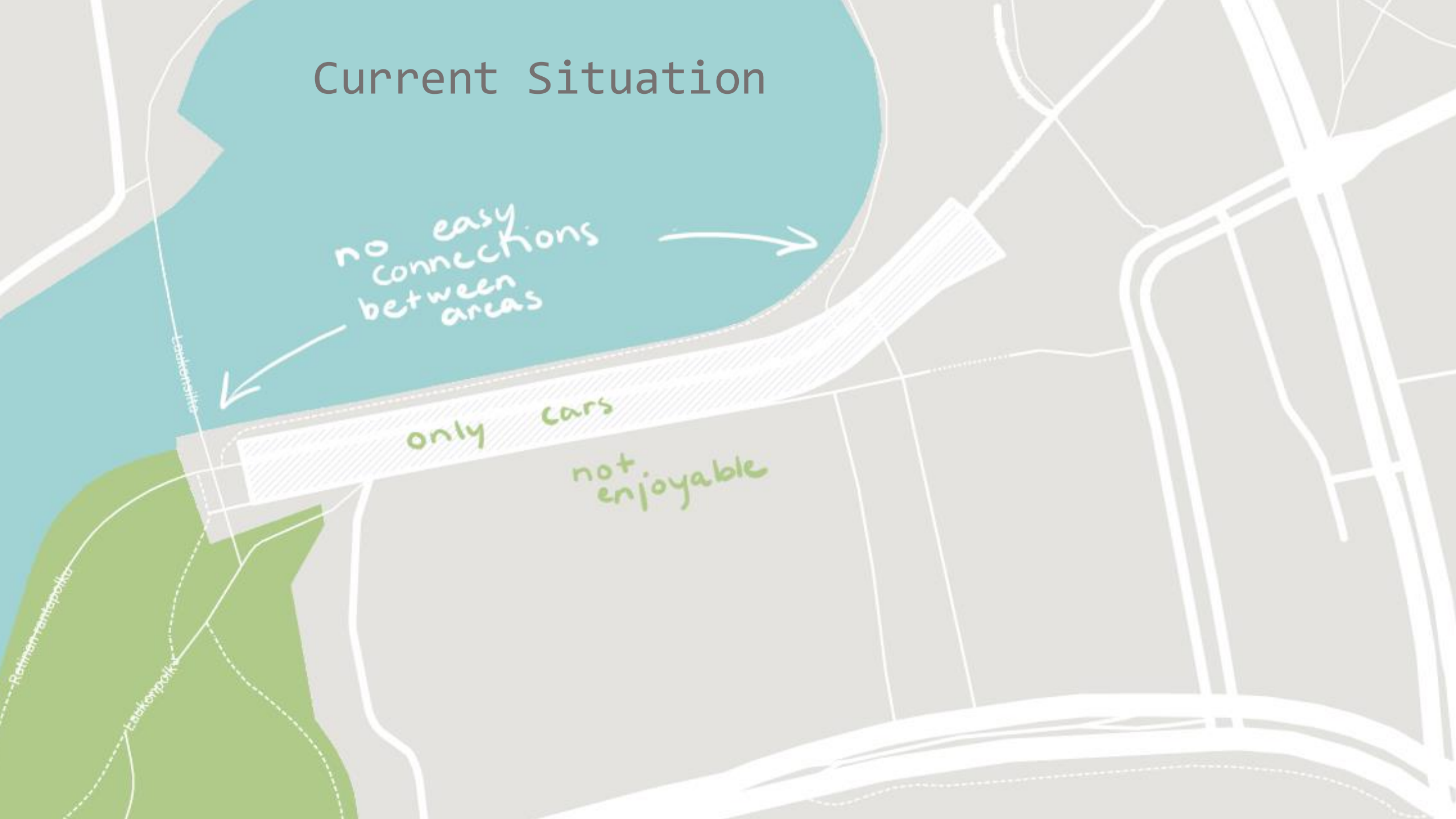
Aligned with Tampere-2030,
we want to encourage
active mobility of citizens

The essence of developing city in
the 21st century is to
connect its citizens

Current Situation

no easy connections between areas

only cars
not enjoyable



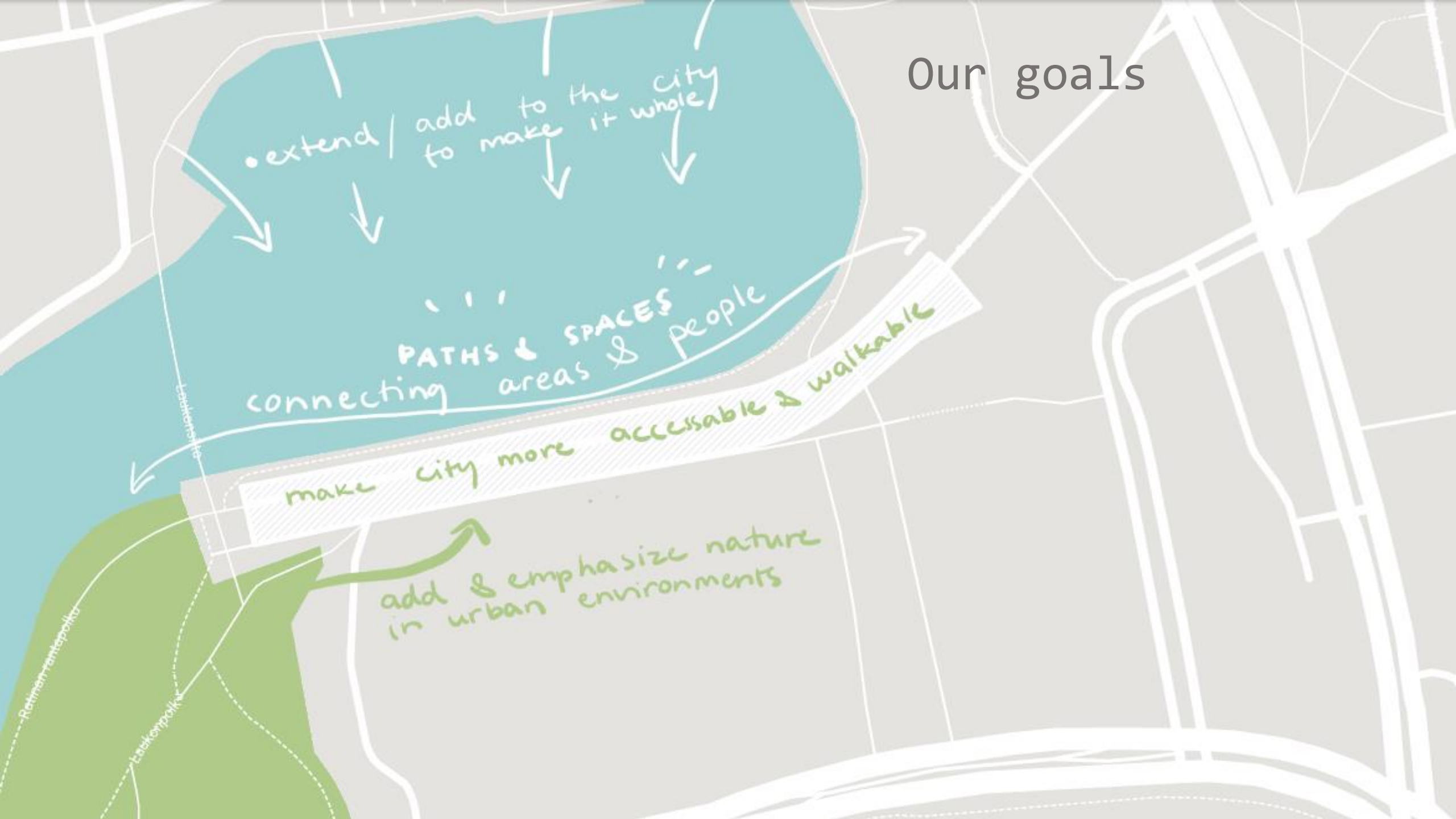
Our goals

• extend / add to the city
to make it whole

PATHS & SPACES
connecting areas & people

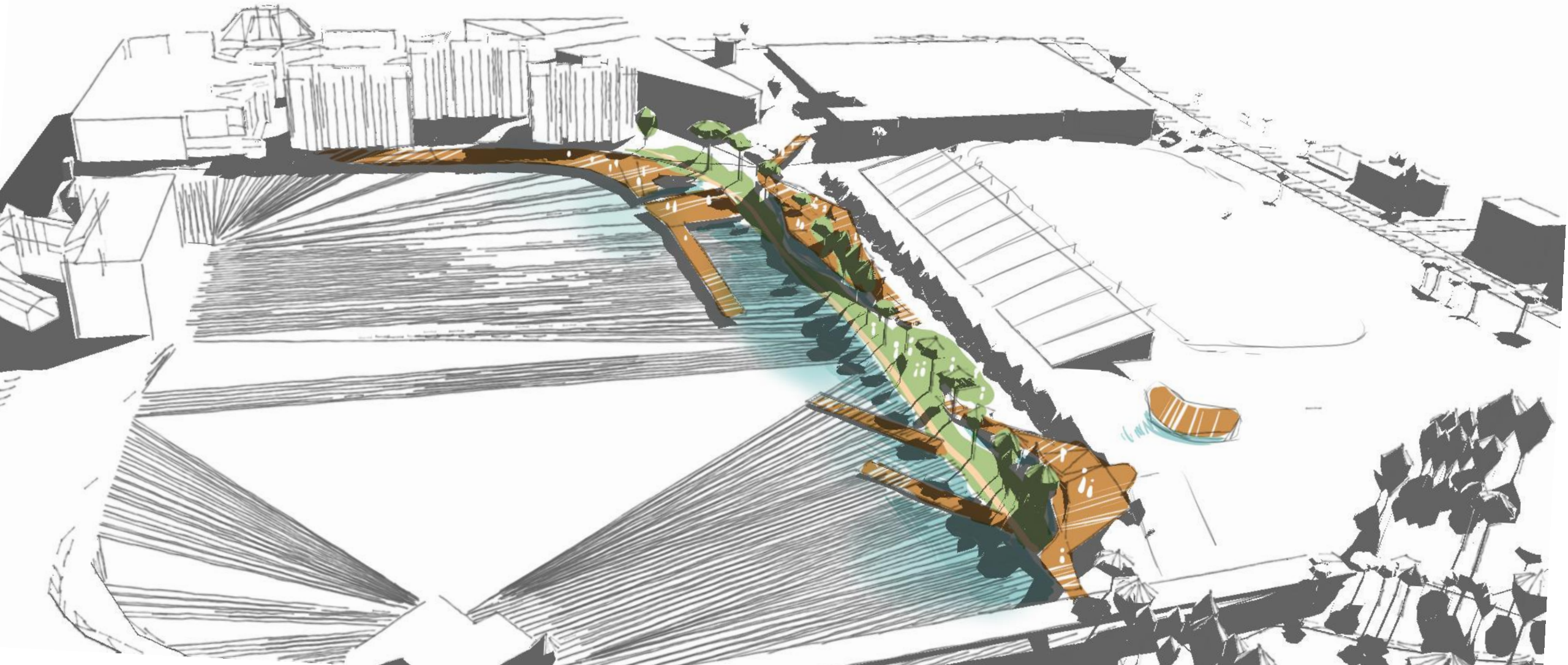
make city more accessible & walkable

add & emphasize nature
in urban environments



POIMU

Sustainable connections

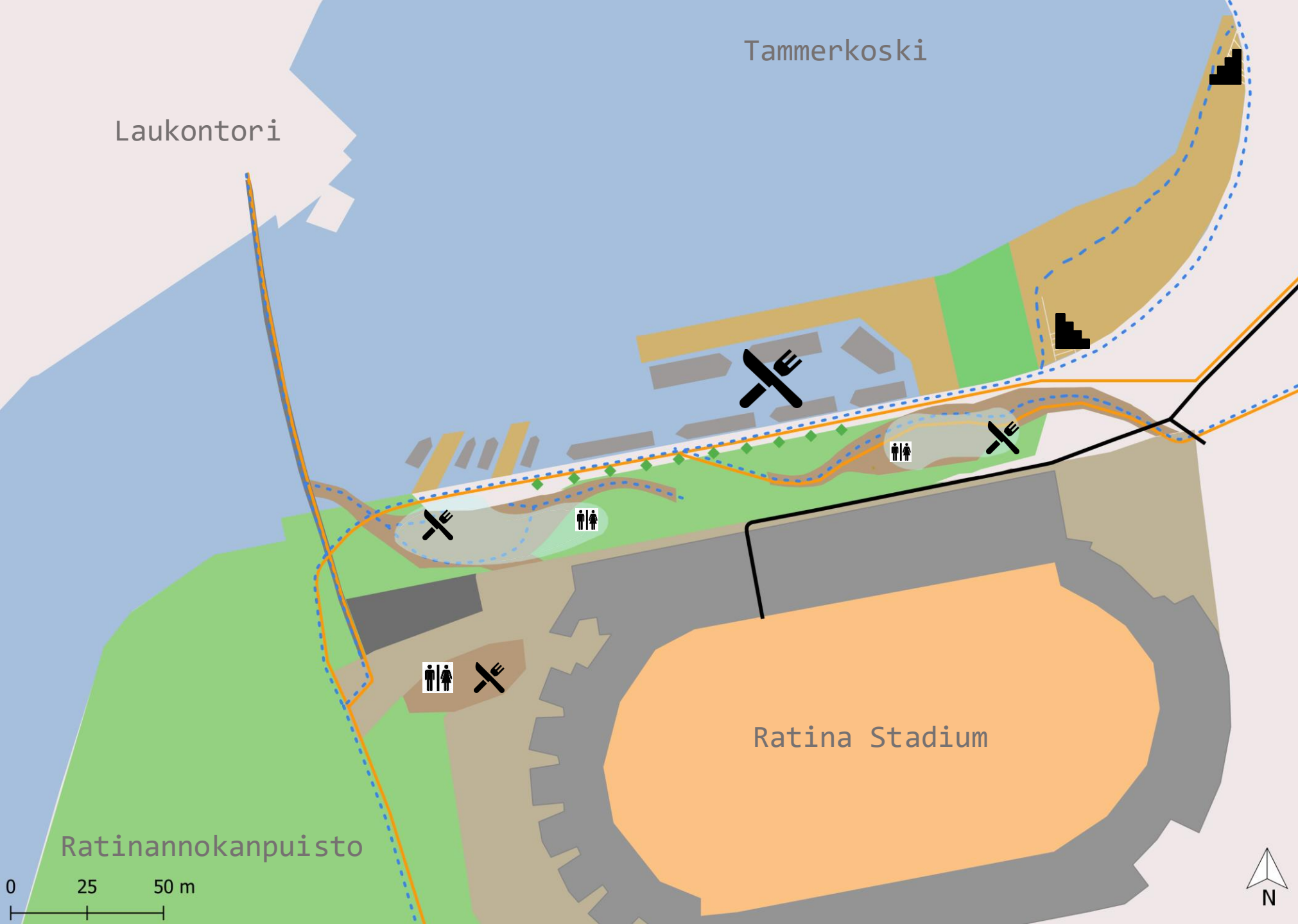
















POIMU

kaareva laskos tai ryppy ihossa,
kankaassa, aivokuoressa tai muussa
kerrostumassa

**maailmankaikkeuden poimuttunut
rakenne, aikapoimu**

Wiki-dictionary



-  
-  
-  
-  
-  
-  
-  Cafes/
Restaurants
-  Stairs



Ratina

FINPARK

A



People
& nature



Areas that were
seperate from
each other



CONNECTIONS
BETWEEN

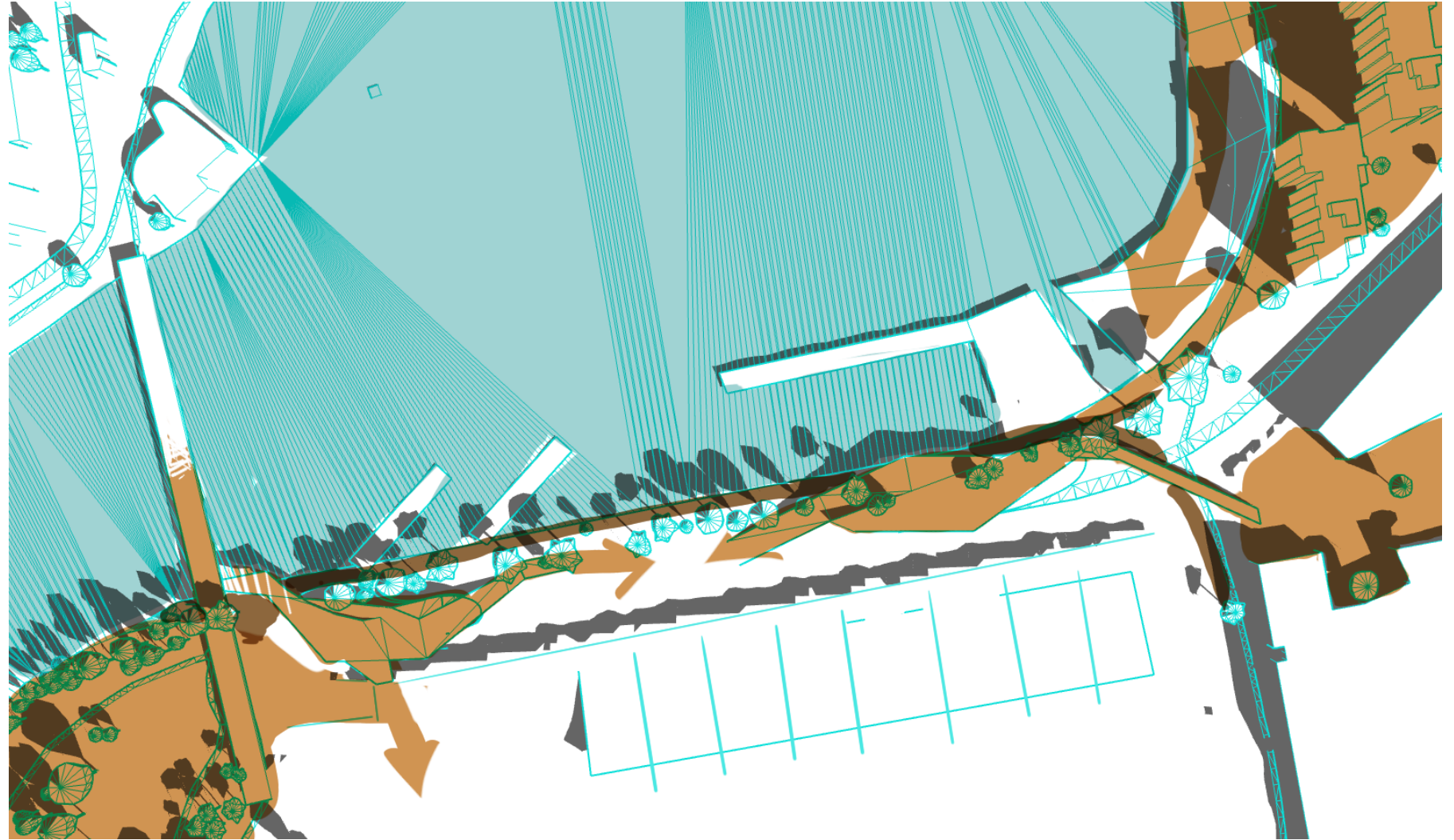
People of
different
ages & interests



New & old
structures

Areal connections

- Direct way down from the bridge
- Connecting routes from Laukontori, Ratina and Ratinannokan puisto





We connect people of
different ages in one space
all year round



- Board games loan
- safety from cars



- hang-out place
- study space
- activities



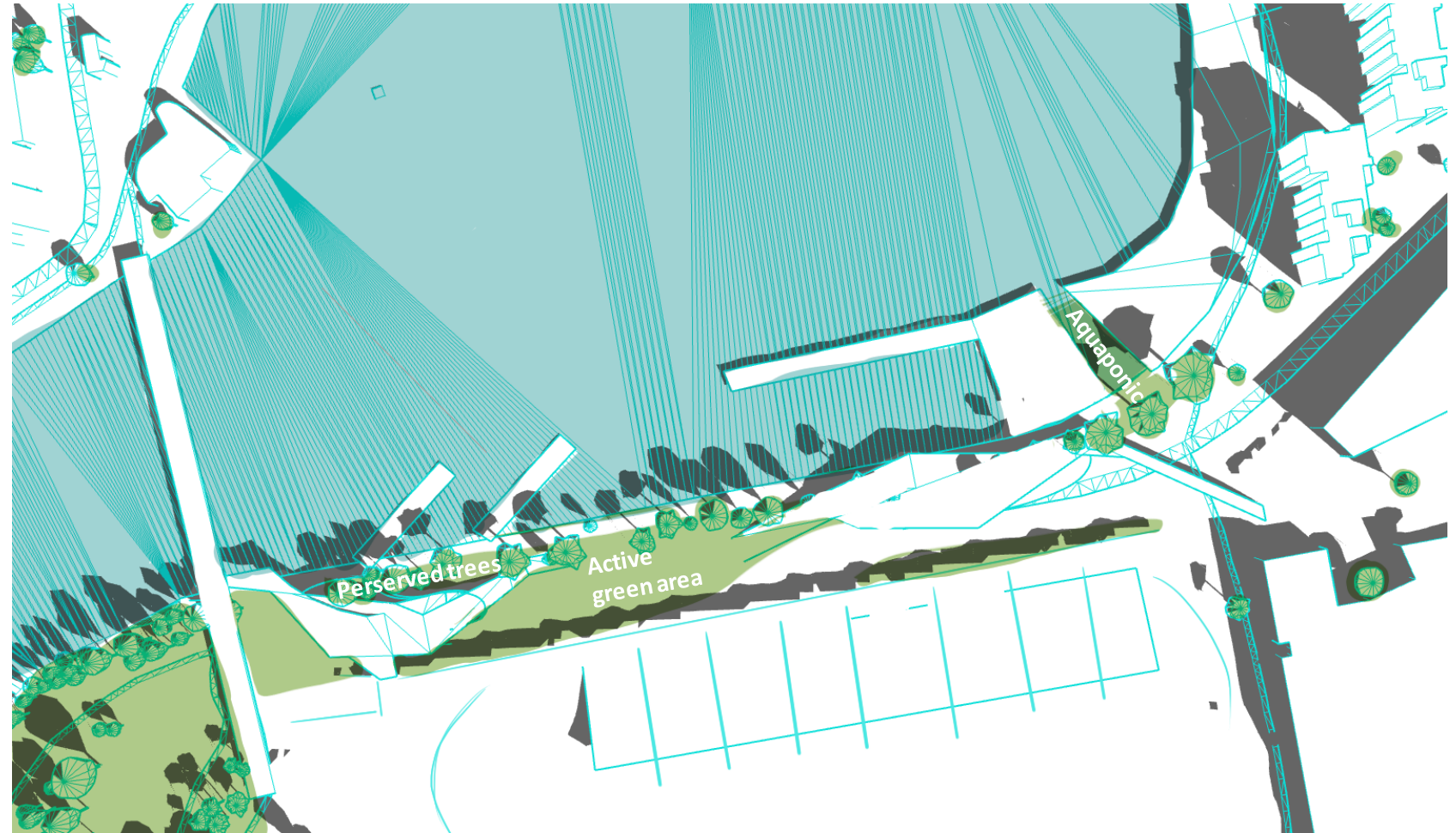
- services
- city boats
- lunch place



- chess boards with waterfront view
 - accessible routes
-

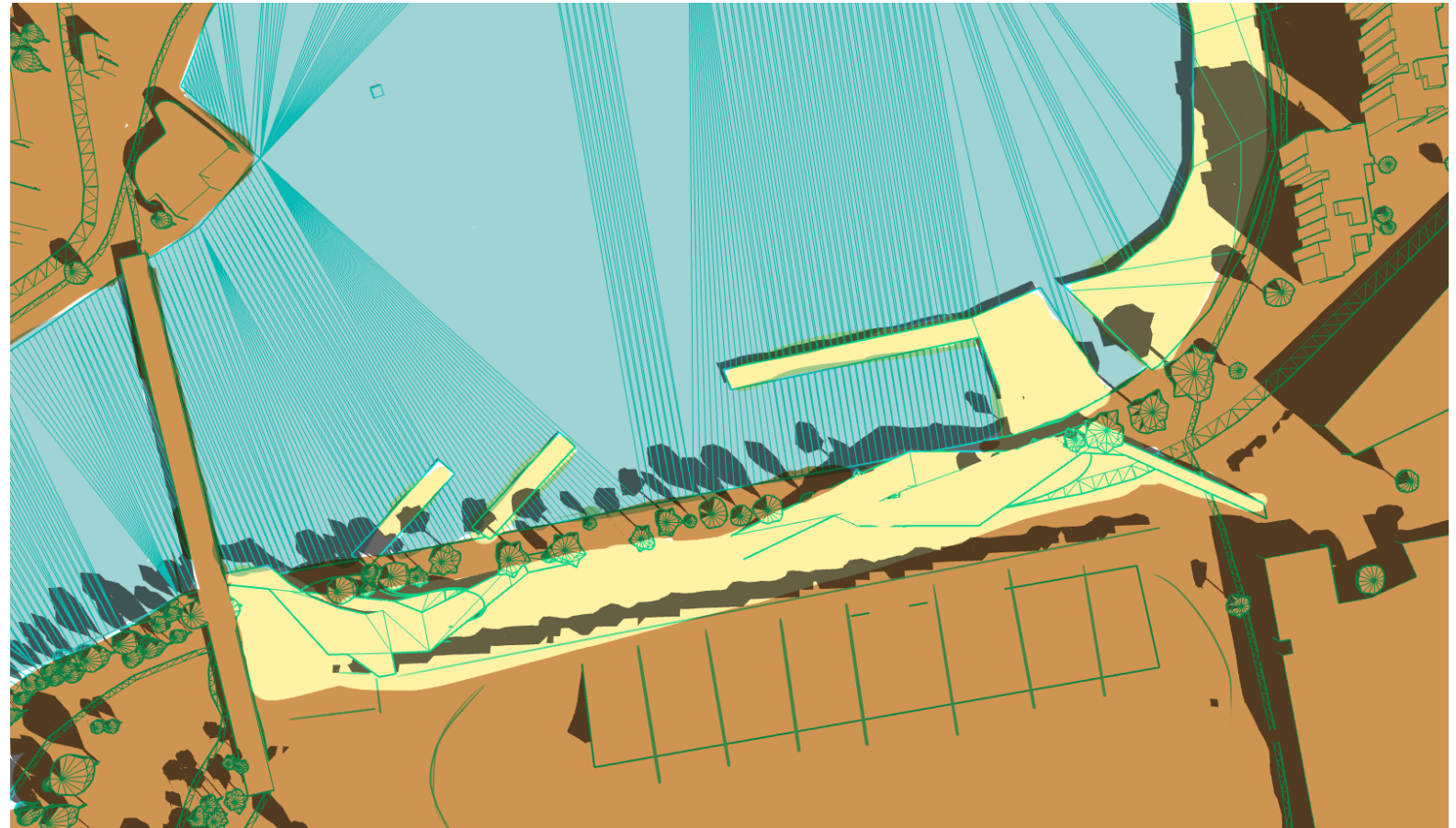
Natural connections

- Increase of greenspaces
- Reduced noise pollution
- Increased biodiversity
 - Aquaponic growing
- Positive effect on people's health



Connections between new and old

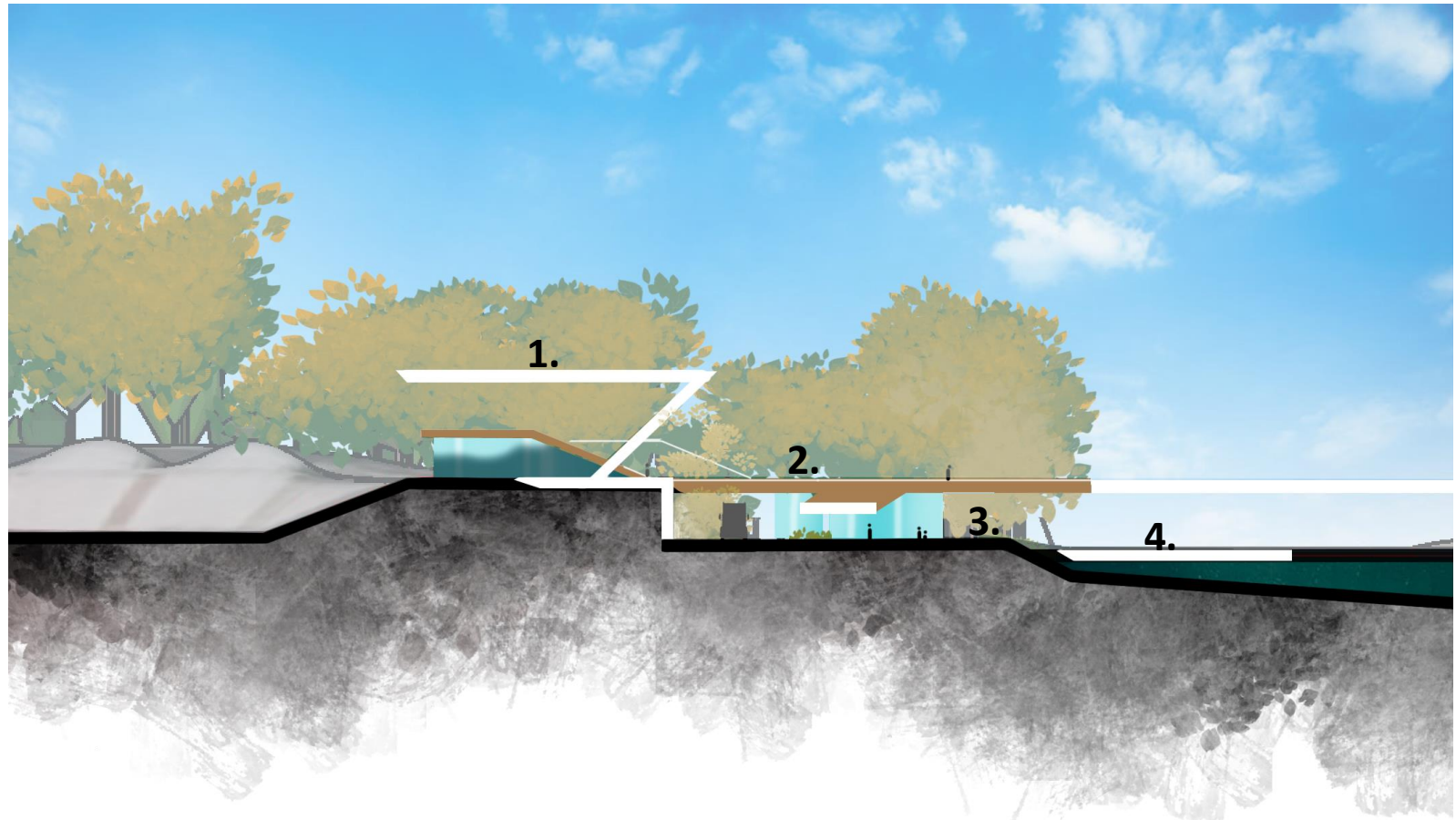
- Preservation of existing structures
- Creating inviting environment by modern constructions



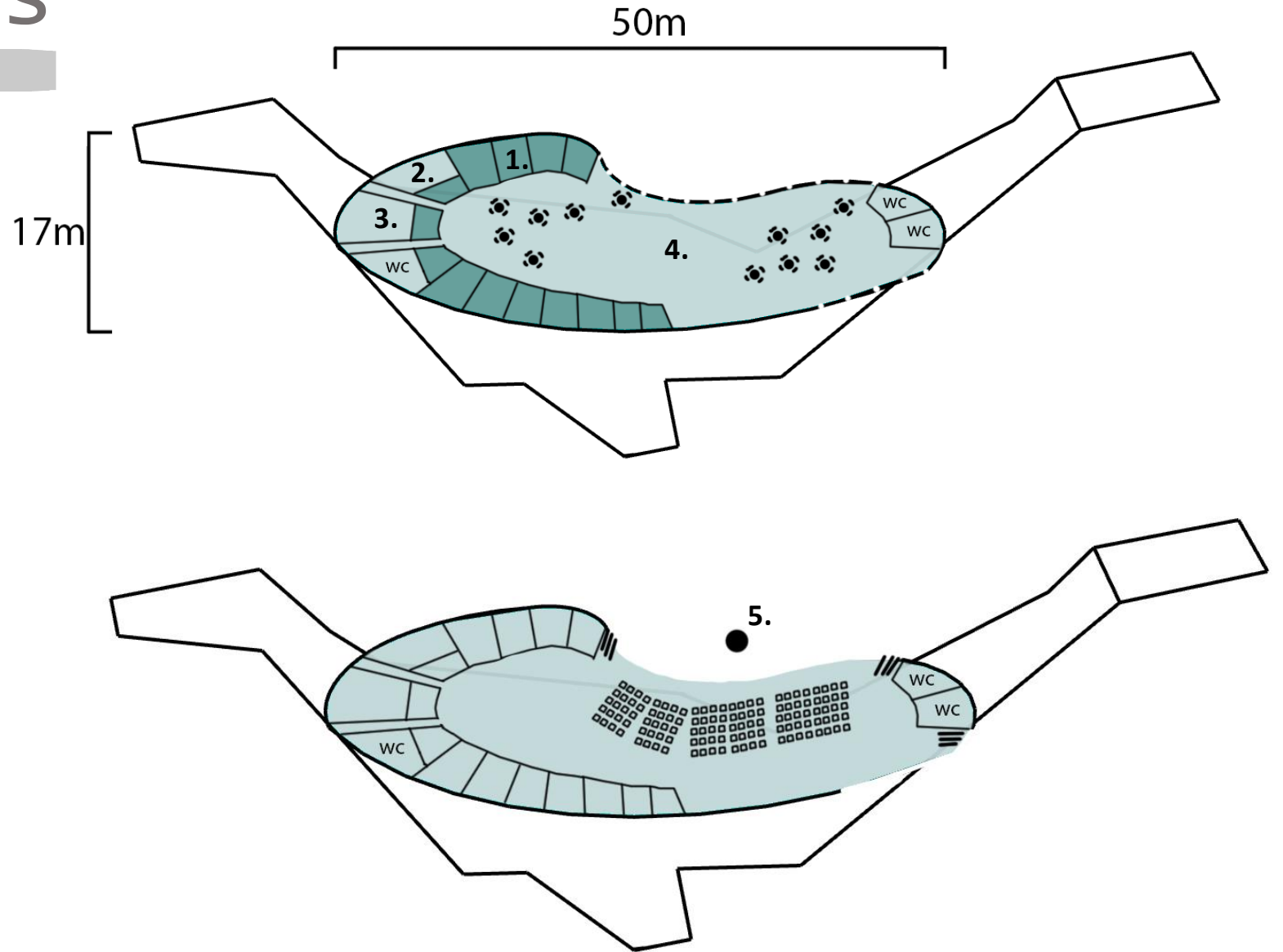
● New structure
● Old structure

Connection between levels

1. Stadium's deck-level
2. Bridge-level
Connections and views
3. Ground-level
Spatial connections
between indoors
and outdoors
4. Dock-level
Connection to water



Indoor spaces

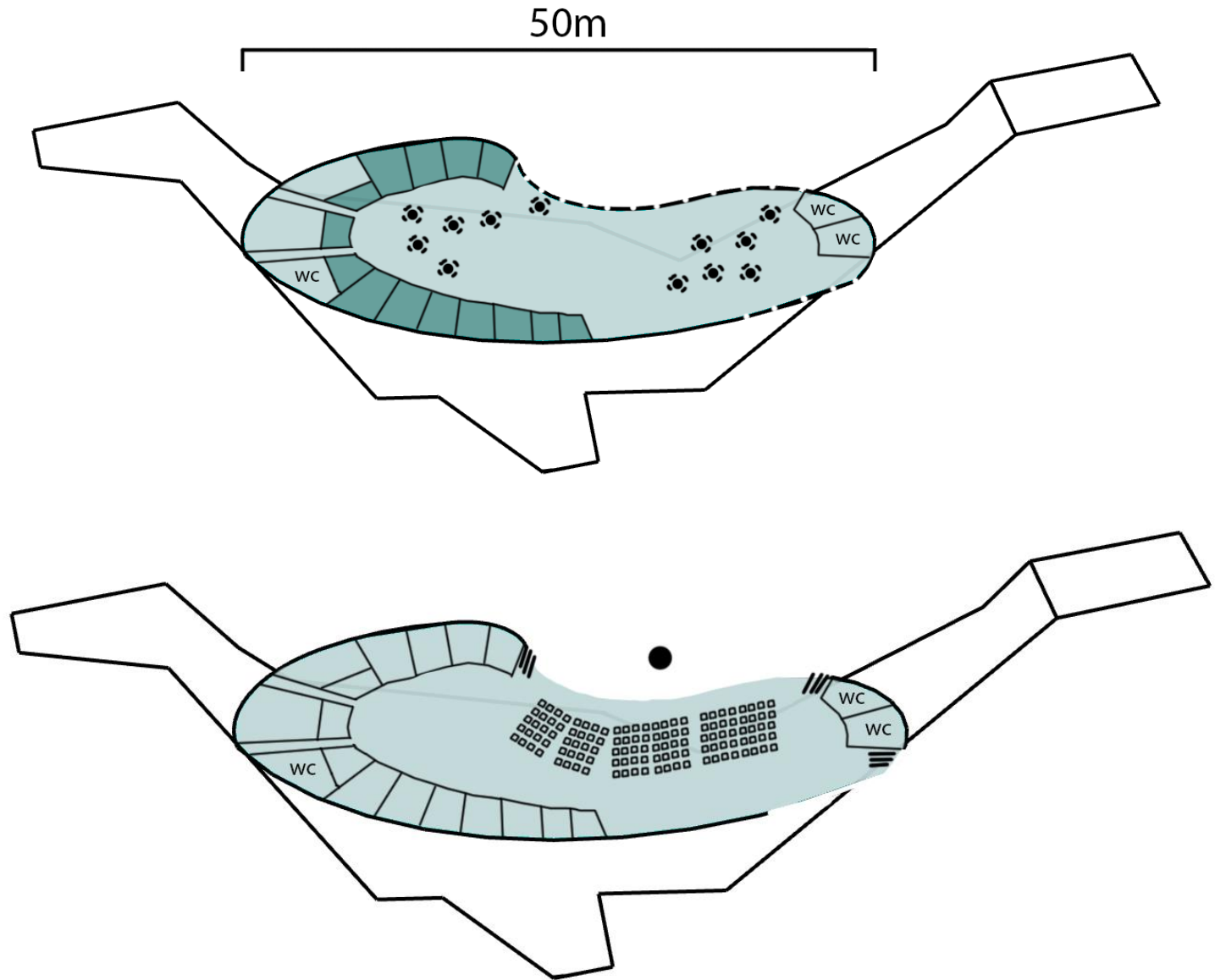


1. Small business / pop-up spaces
2. Kitchen
3. Storage
4. Common space
5. Lecture/concert position possibility

Indoor spaces

The space can be connected to nature by opening the glass facade, for example to use as a lecture-, concert-, or just a big summer square.

During winter these big glass livingrooms give shelter from rain and wind, and provide a space to enjoy lake view on a cold picnic day.



View from diverse perspectives

- Water view isn't blocked
- Diverse atmosphere through lightning





Sustainability & Inclusivity

Environmental sustainability

- Increasing walking and biking areas
- Using wood and glass materials
- Supporting biodiversity with aquaponic system



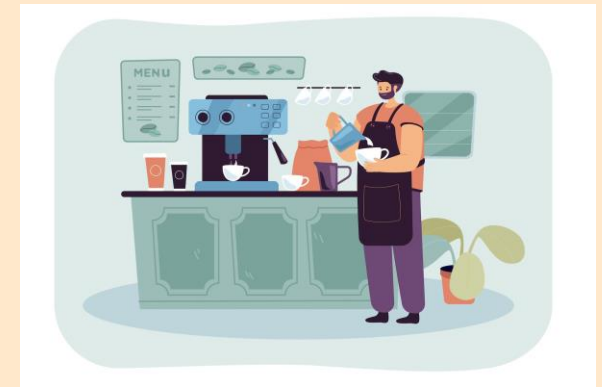
Social Sustainability

- Area accessible for everyone: no exclusion by age, socioeconomic status, education level
- Area accessible throughout the year
- Area combines businesses and public spaces



Economic sustainability

- Business opportunities instead of empty space;
- Study / working areas for locals;
- Increasing the flow of citizens and tourists



Inclusivity

Ramps built
to 8%
decline with
resting
ramps



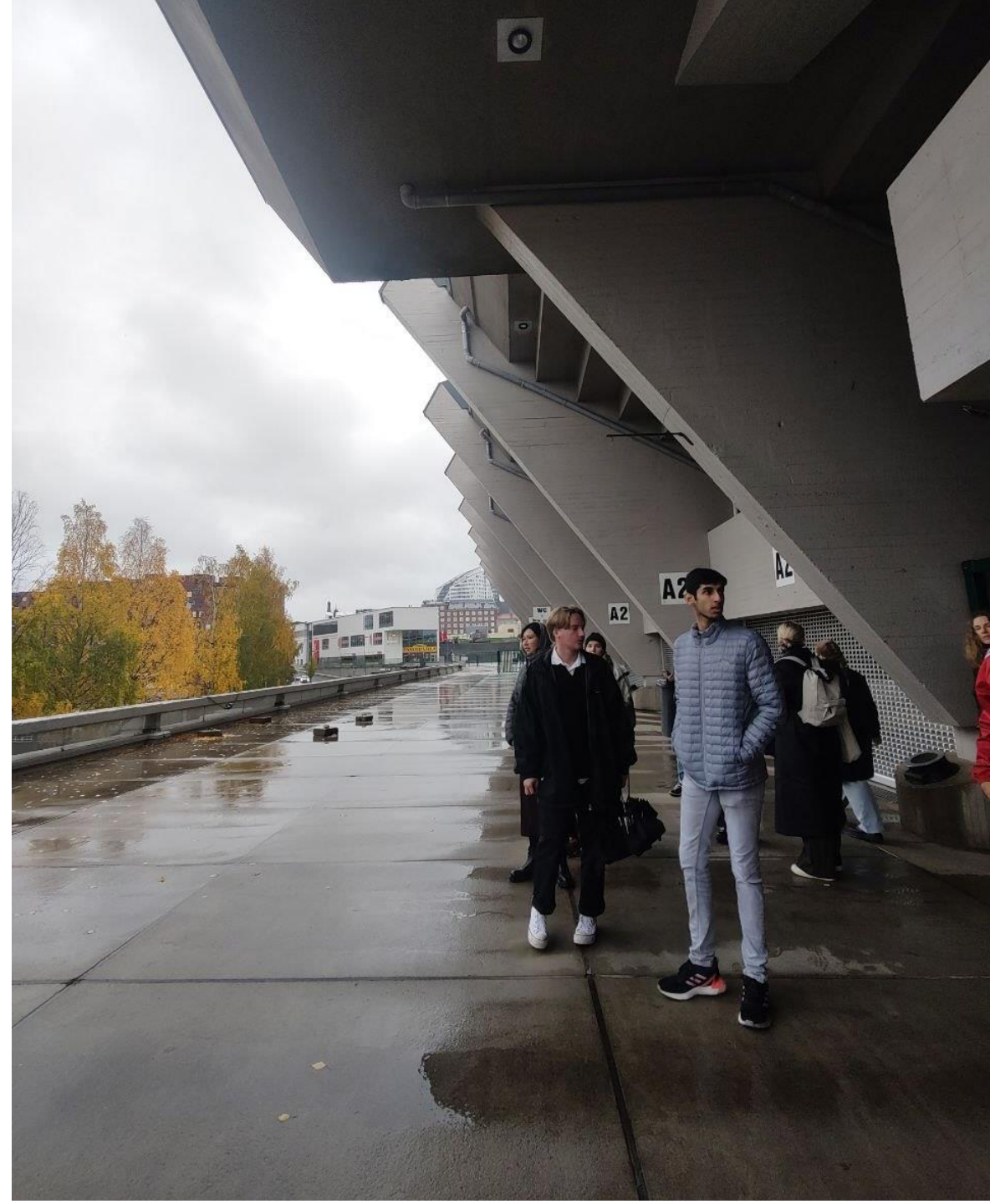
Ratina area is for
walkers, cyclists
and drivers -
one option isn't
overpowering other


Convenient
for everyone



Let's create sustainable and inclusive space to connect people in Ratina Suvanto.

Design process





Thank you!

